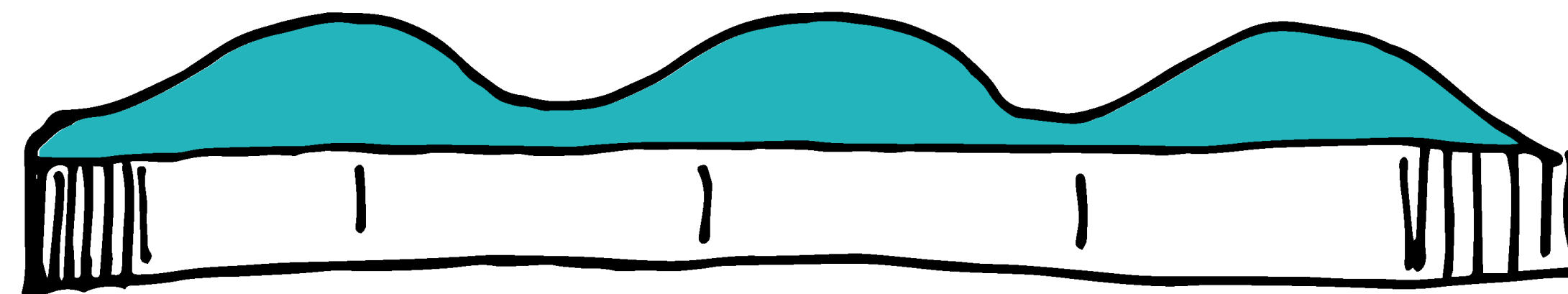
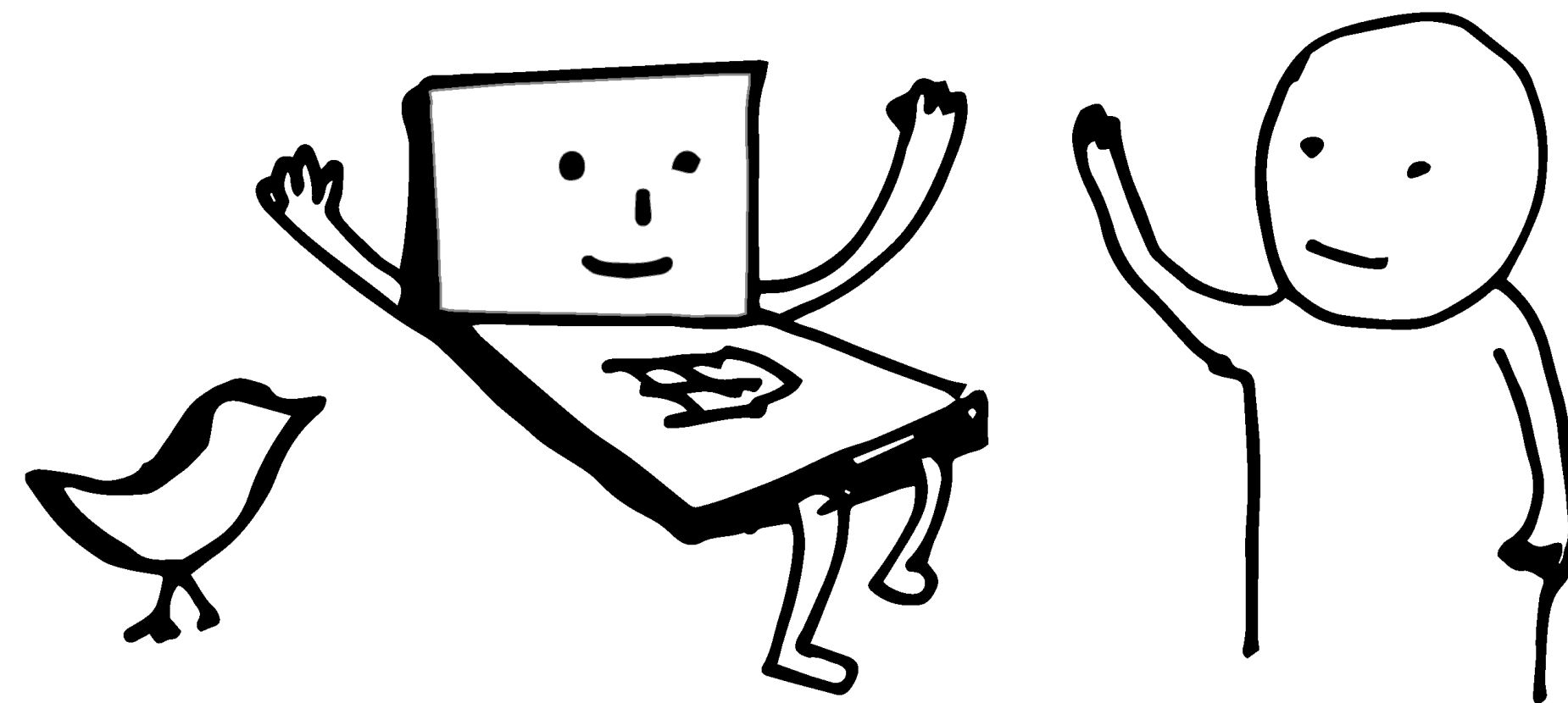


SFPC Summer 2019 in Yamaguchi



2019 . Sept 4 - 11

APPLY BY JULY 9









照明デザイナー
高原文江



コーディネーター
山田ちほ



エドューケーター
菅沼聖



パブリシスト
谷紗矢乃



アーキビスト／ウェブディレクター
渡邊朋也



エドューケーター
山岡大地



顧問
足立明男



プロダクション・マネージャー
クラレンス・ン・キアン・ピアオ



エドューケーター
安藤充人



映像エンジニア／デバイス・エンジニア
今野恵菜



キュレーター
レオナルド・バルトロメウ



グラフィックデザイナー
高原歩美



サーバー・ネットワーク・エンジニア
三浦陽平



エドューケーター
石川琢也



エドューケーター
原泉



パブリシスト
石井草実



パフォーマンス・プロデューサー
竹下暁子



アート・アドミニストレーター
福地ひかり



エドューケーター
金子春香



映像エンジニア／メディア
ツールズ
大脇理智



舞台機構エンジニア／空間
デザイナー
安東星郎



キュレーター
吉崎和彦



音響エンジニア
中上淳二



館長
増田肇



R&Dディレクター
伊藤隆之



キュレーター
前原美織

ACTIVITIES OF YCAM

```
graph TD; A[ACTIVITIES OF YCAM] --> B[EDUCATION]; A --> C[ART EXPRESSION]; A --> D[COMMUNITY];
```

EDUCATION



ART EXPRESSION



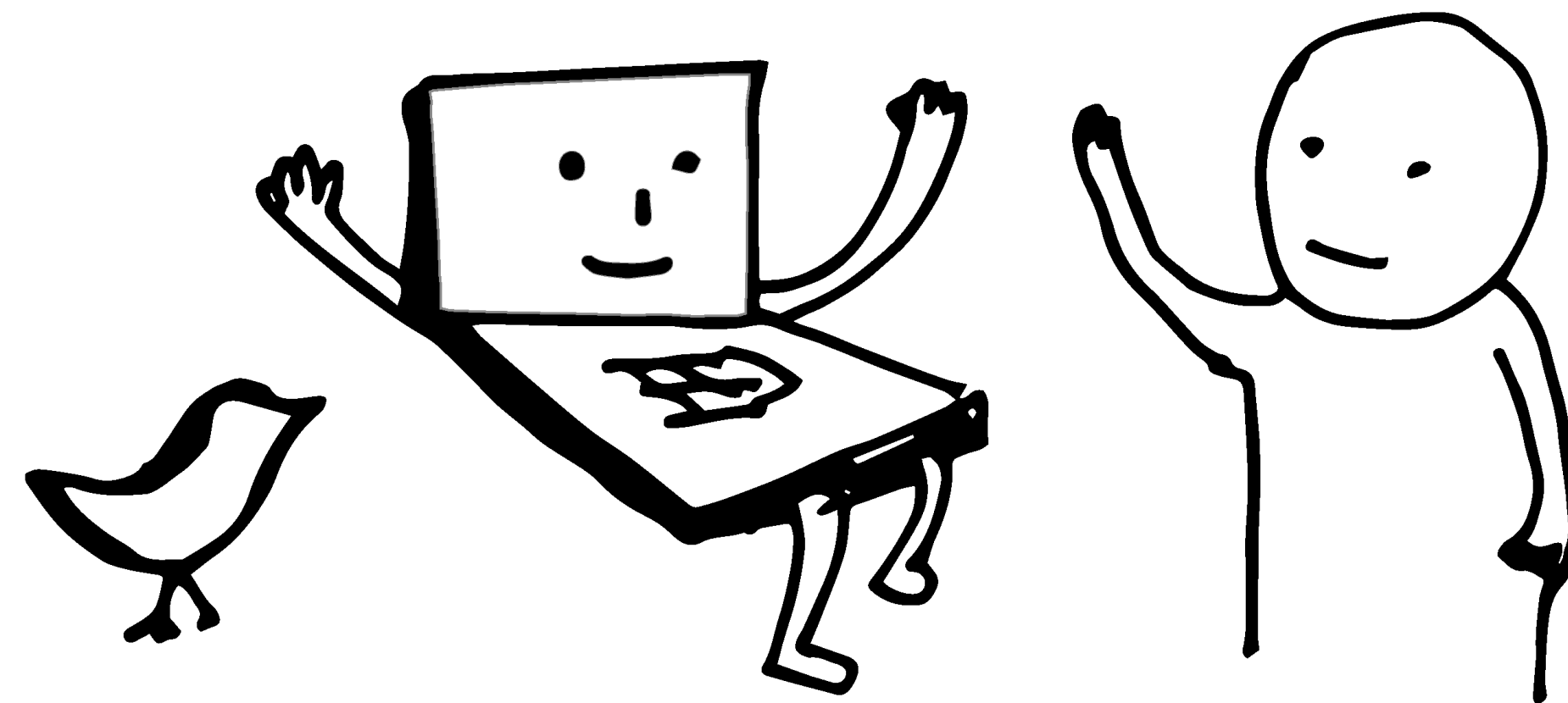
COMMUNITY







SFPC Summer 2019 in Yamaguchi



2019 . Sept 4 - 11

APPLY BY JULY 9



CARE
CONTROL
PERSON
USER
UNLEARN
MACHINE
LEARN



School
for
Poetic
Computation

School
For
Poetic
Computation

School for Poetic Computation

SFPC SUMMER 2019
YAMAGUCHI
CURRICULUM

DANCE — SIGN LANGUAGE

UNIX

ELECTRONICS

Dat

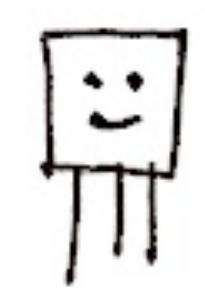
Math



Origami

GAMES

DNA



Secure Scuttlebutt

Poetry

Paper

Javascript

Family dinner

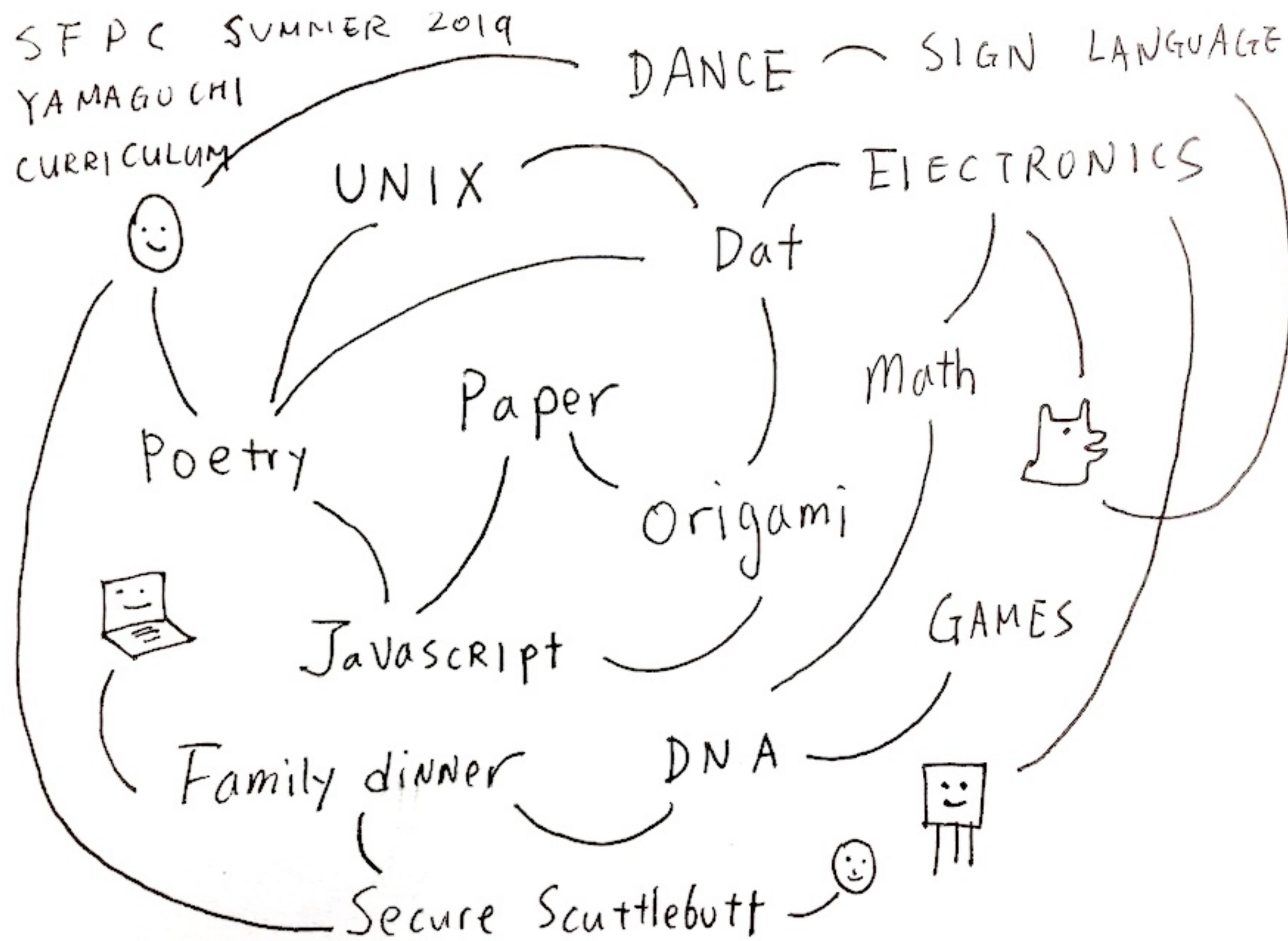
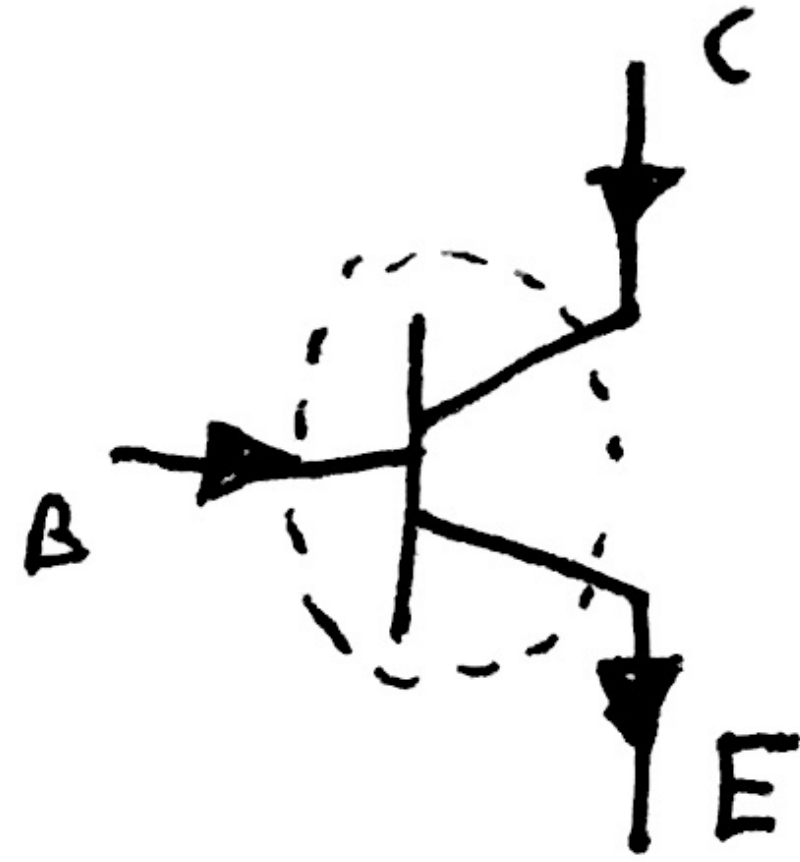
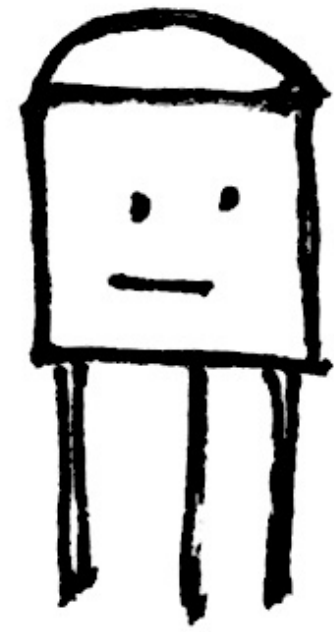




Photo: Naoki Takehisa
Courtesy of Yamaguchi Center for Arts and Media [YCAM]



Photo: Naoki Takehisa
Courtesy of Yamaguchi Center for Arts and Media [YCAM]



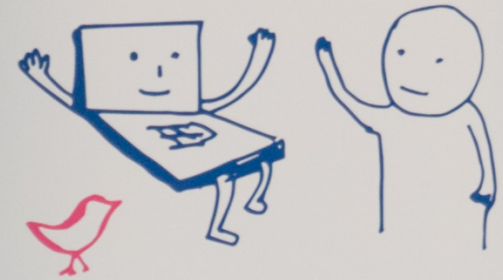
Handmade computer

by Taeyoon Choi



poetic computation

Summer 2019
in Yamaguchi



P

C



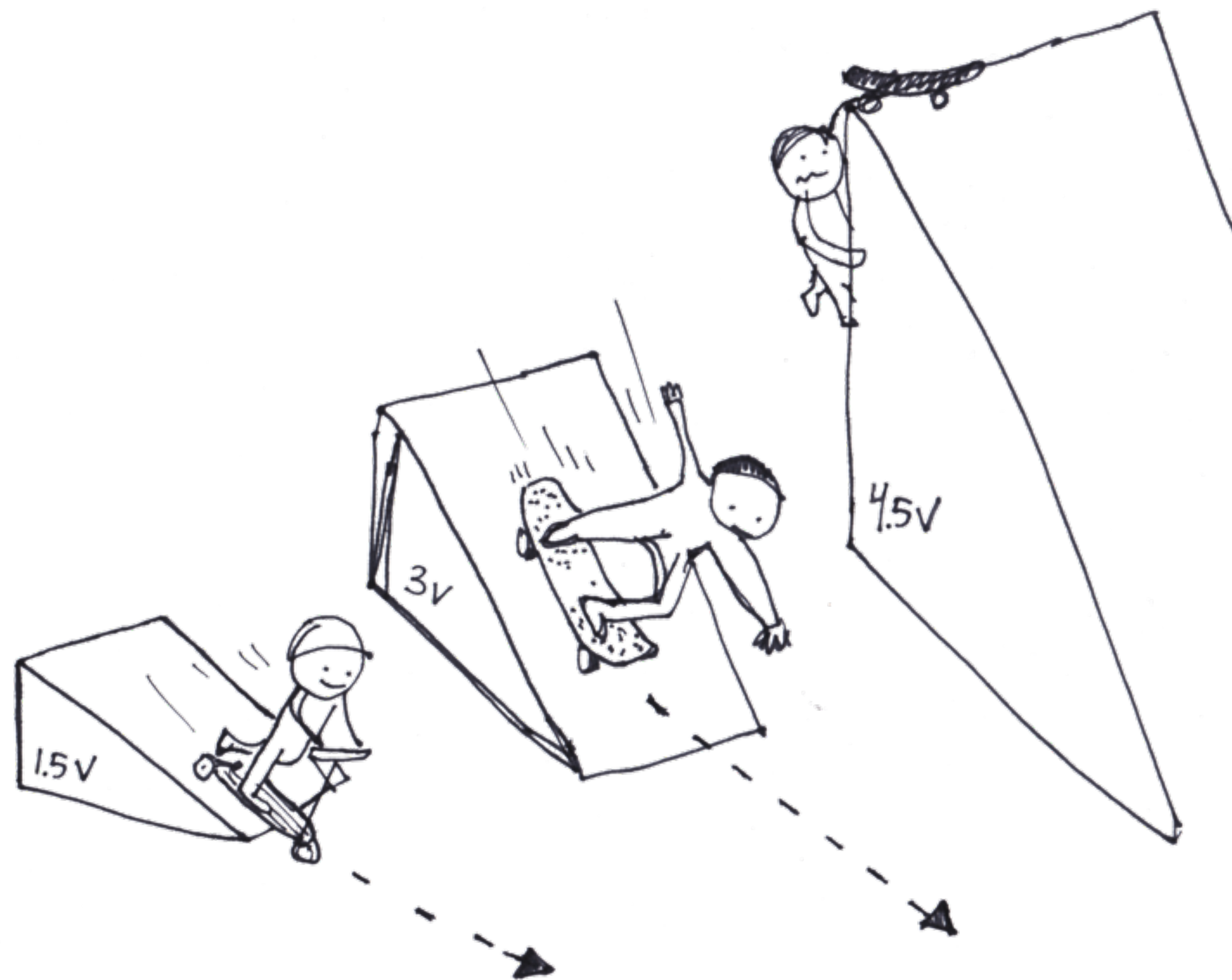
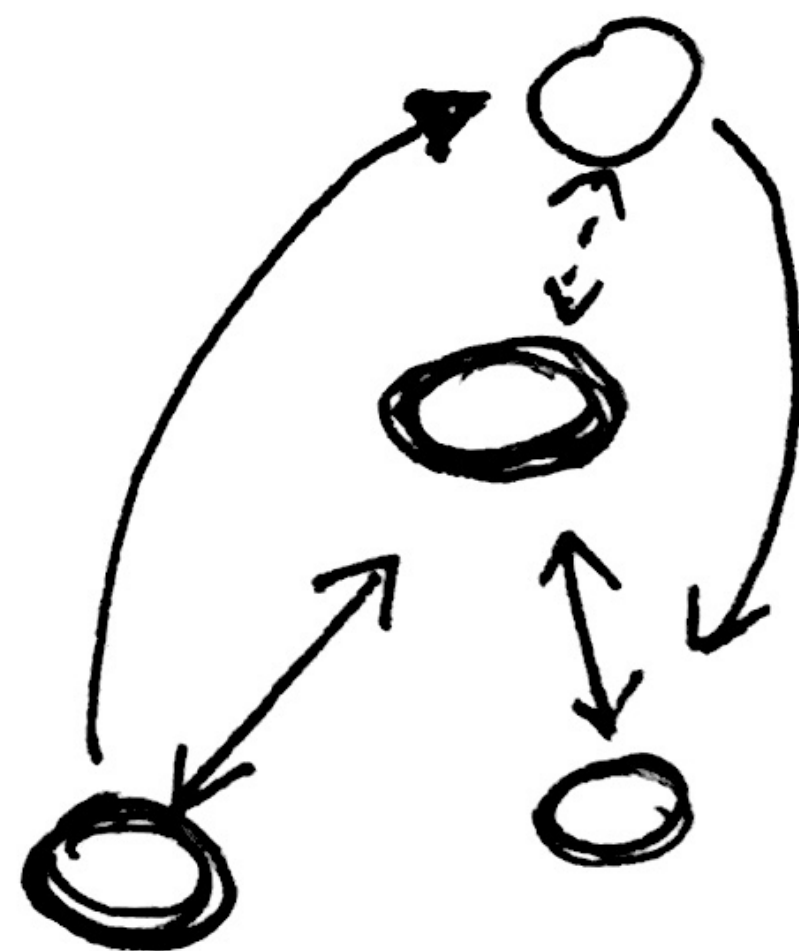
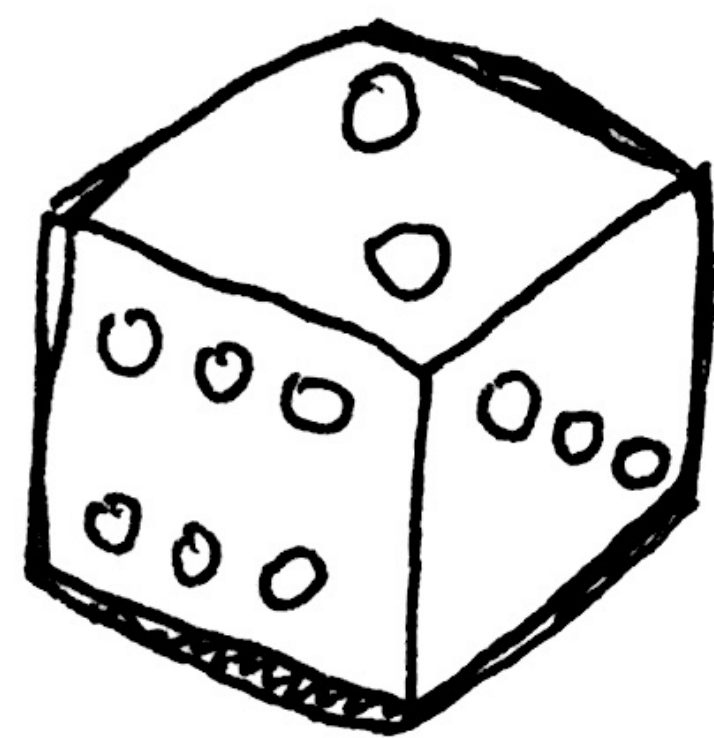




Photo: Naoki Takehisa
Courtesy of Yamaguchi Center for Arts and Media [YCAM]



Photo: Naoki Takehisa
Courtesy of Yamaguchi Center for Arts and Media [YCAM]



Playing the World
by Jane Friedhoff





Photo: Naoki Takehisa
Courtesy of Yamaguchi Center for Arts and Media [YCAM]



Photo: Naoki Takehisa
Courtesy of Yamaguchi Center for Arts and Media [YCAM]

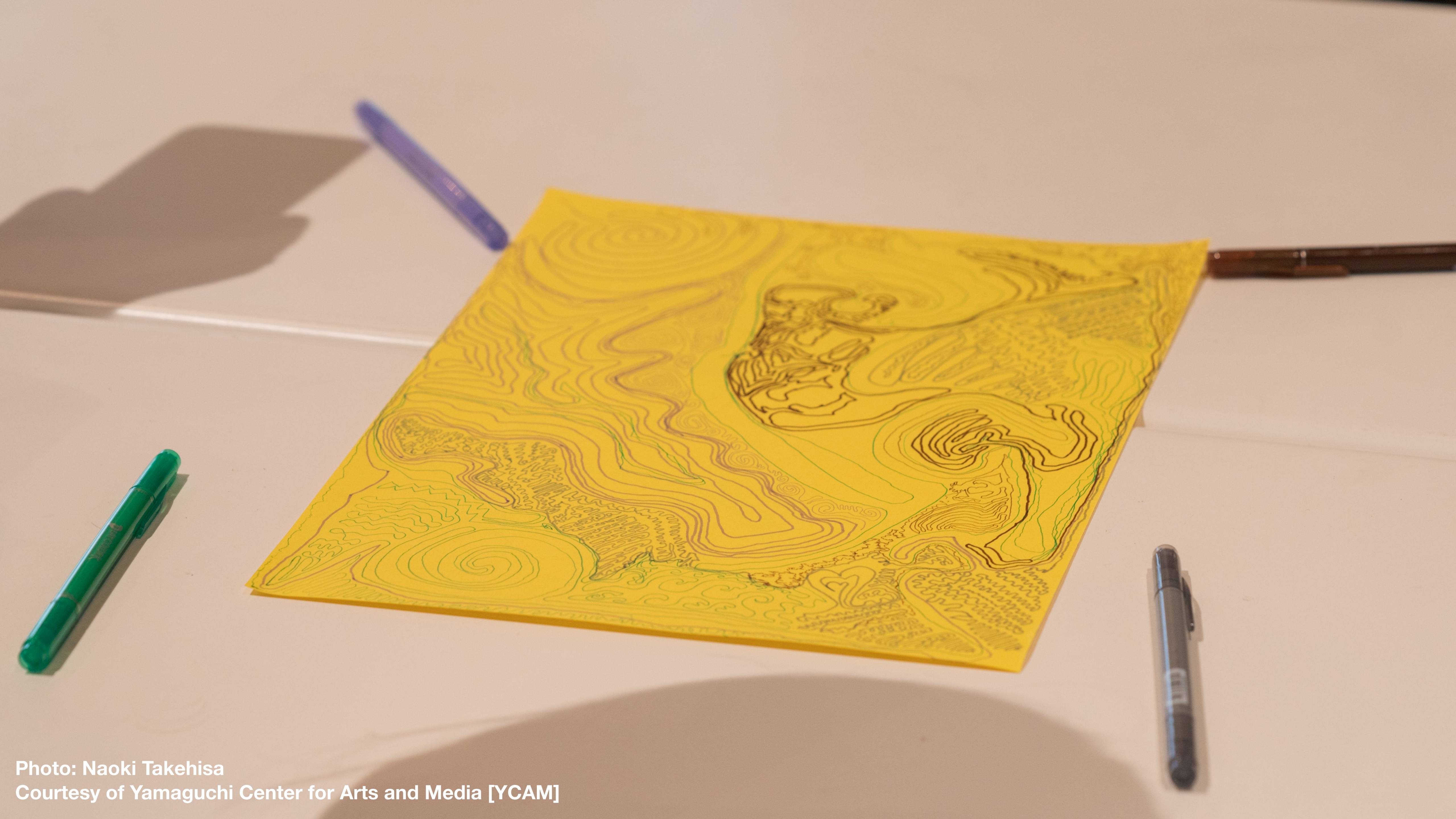


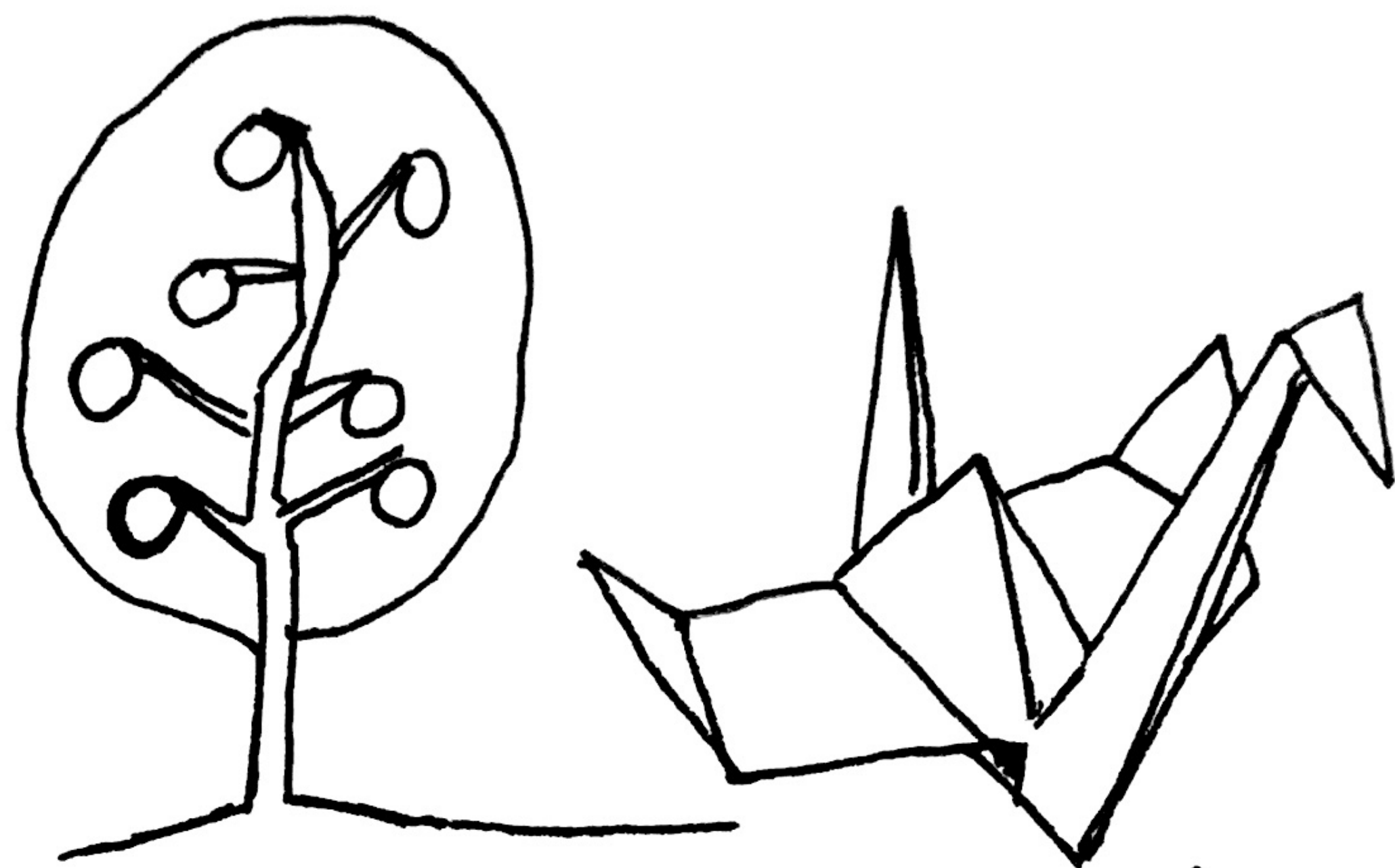
Photo: Naoki Takehisa
Courtesy of Yamaguchi Center for Arts and Media [YCAM]



Photo: Naoki Takehisa
Courtesy of Yamaguchi Center for Arts and Media [YCAM]



Photo: Naoki Takehisa
Courtesy of Yamaguchi Center for Arts and Media [YCAM]



garden mathematics

by Robby Kraft





Photo: Naoki Takehisa
Courtesy of Yamaguchi Center for Arts and Media [YCAM]



Photo: Naoki Takehisa
Courtesy of Yamaguchi Center for Arts and Media [YCAM]




Photo: Naoki Takehisa
Courtesy of Yamaguchi Center for Arts and Media [YCAM]



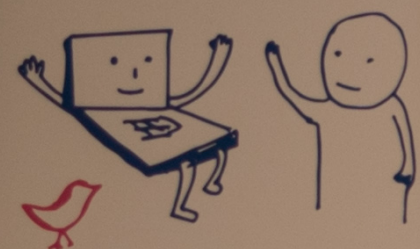
Photo: Naoki Takehisa
Courtesy of Yamaguchi Center for Arts and Media [YCAM]



Peer to Peer Poetry
by Melanie Hoff 

School for
poetic
computation

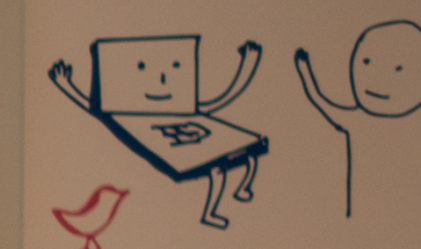
Summer 2019
in Yamaguchi



P C

School for
poetic
computation

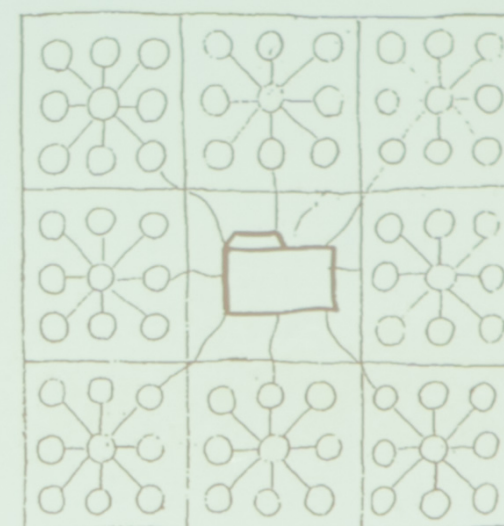
Summer 2019
in Yamaguchi



P C

DAY 2

DAY 2



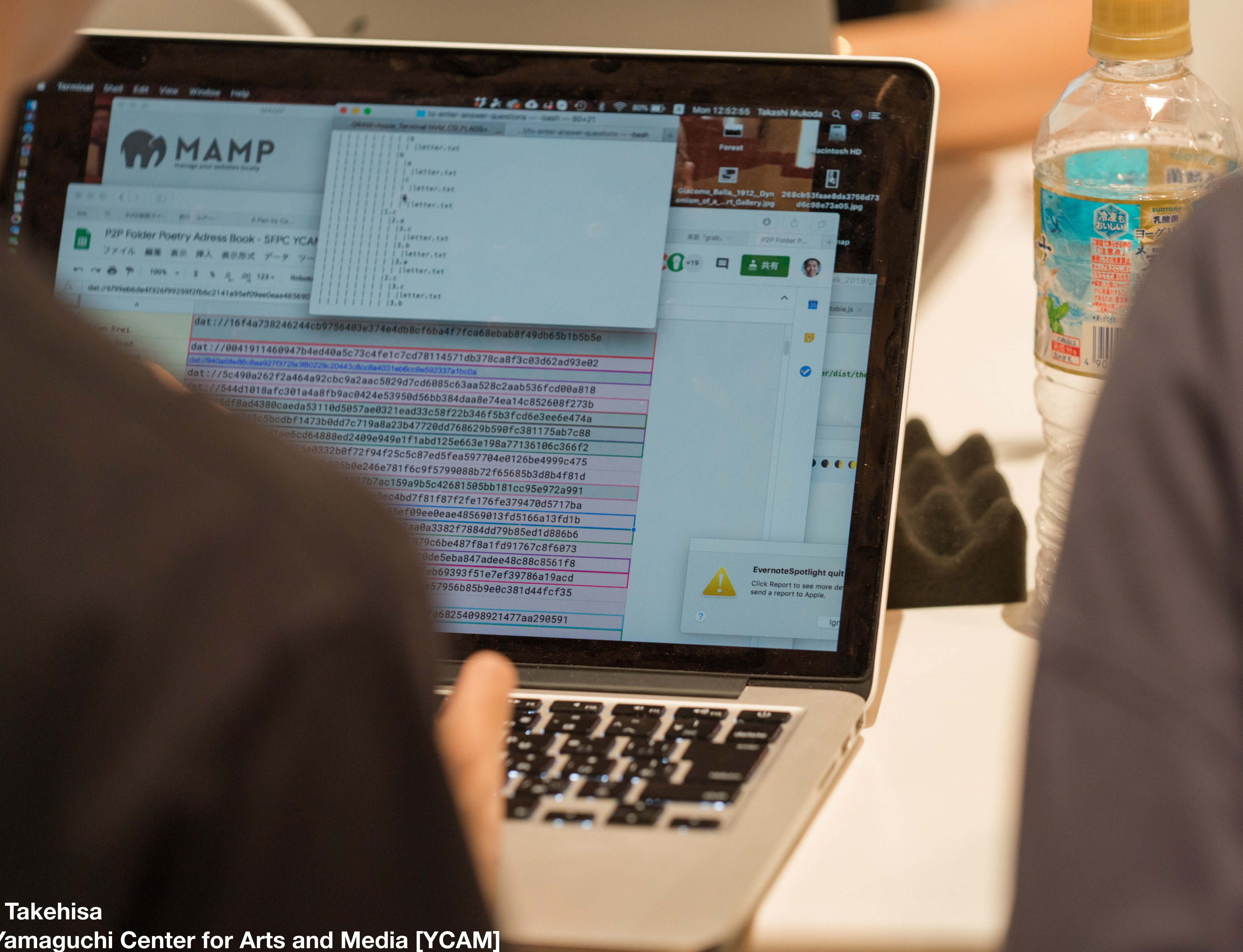
DAY 2

DAY 2

tinyurl.com/folderycam



Photo: Naoki Takehisa
Courtesy of Yamaguchi Center for Arts and Media [YCAM]



github.com/melaniehoff/Peer-to-Peer-Folder-Poetry

58ba27bce1dc

In the park, there is a bench with a roof called asomoya in Japanese. The last thing I remember from yesterday night was that me and my classmates had a drink here. Father introduced us a cocktail of omeshu and Sake-toke and it was good. We split in 2/3 and that is the last thing I remember.

There was no sign of asomoya or Akasaka.
(x,x)
asumaya.txt

I found under the bed and took but no, I couldn't find them!!

under the bed.txt

```
|Marika gift
| |strawberry
| |color
| | |3.txt
| | |2.txt
| | |1.txt
| |sense
| |tasting
| |touching
| |looking_
| |text
| |front
| | |illustr
| | |straw
| |taste
| |taste_
| |name
| | |text.t
| | |font.t
| |company
| | |meiji.t
| | |foundin
|hello-folder-r
```

Arts and Media [YCAM]



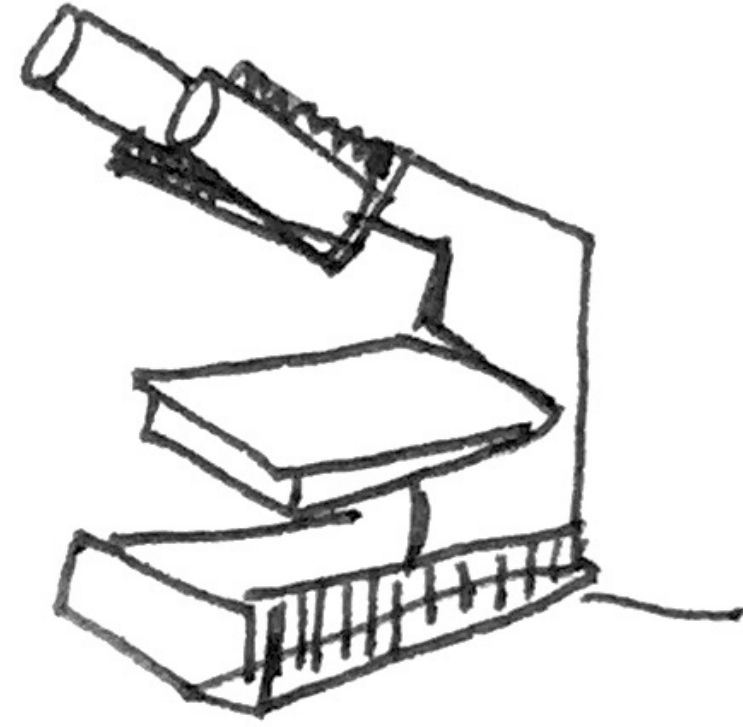
Photo: Naoki Takehisa
Courtesy of Yamaguchi Center for Arts and Media [YCAM]



Photo: Naoki Takehisa
Courtesy of Yamaguchi Center for Arts and Media [YCAM]



Photo: Naoki Takehisa
Courtesy of Yamaguchi Center for Arts and Media [YCAM]



DNA bar CODING
by Takayuki Ito





WIFI CONNECTION
SSID : SFPC
password : sfpcycamfree

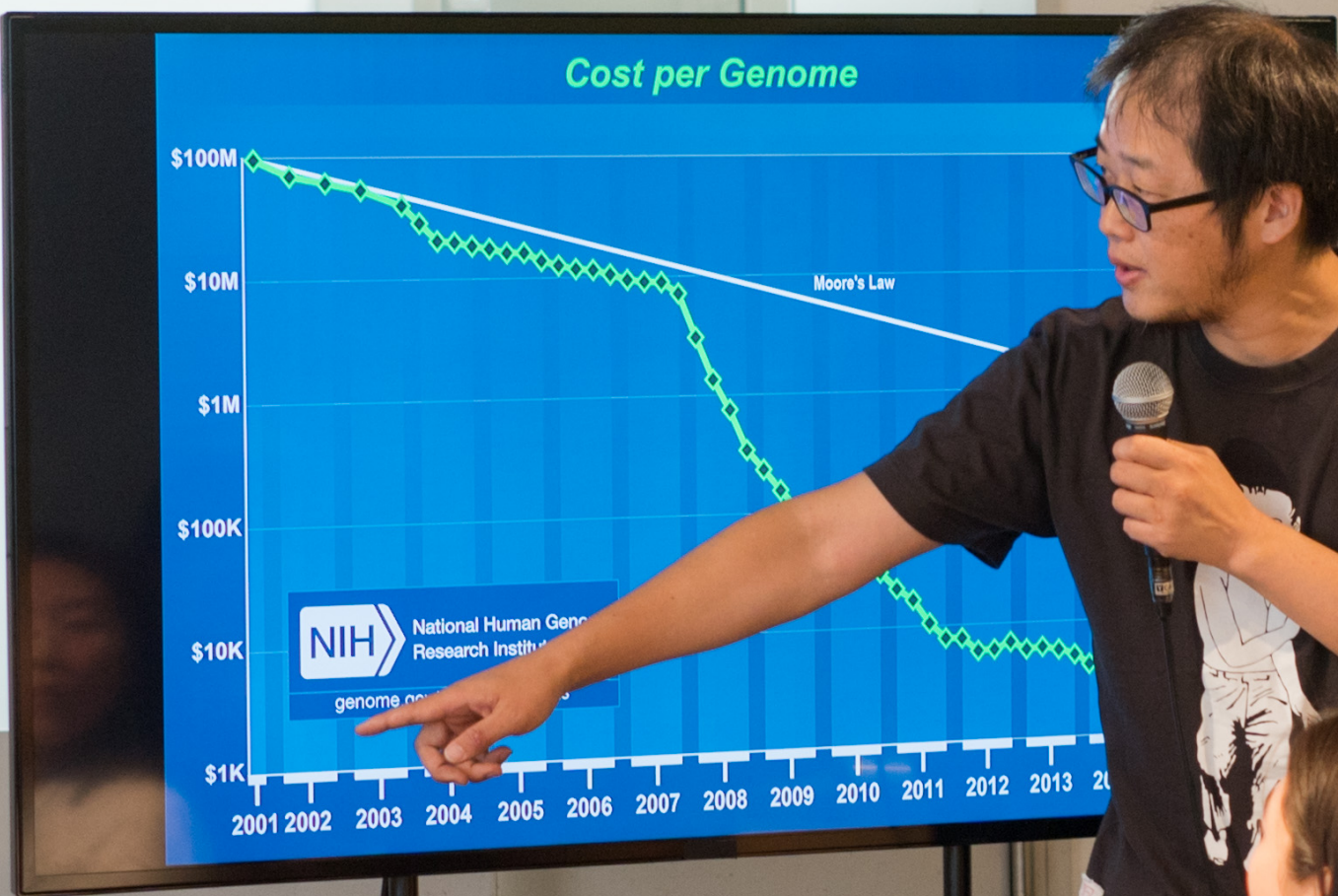


Photo: Naoki Takehisa
Courtesy of Yamaguchi Center for Arts and Media [YCAM]



Photo: Naoki Takehisa
Courtesy of Yamaguchi Center for Arts and Media [YCAM]



Photo: Naoki Takehisa
Courtesy of Yamaguchi Center for Arts and Media [YCAM]



Gestures Inspired by
Hand sign

by RICHIE OWAKI AND Natsumi ~~Waseda~~
Wada





Photo: Naoki Takehisa
Courtesy of Yamaguchi Center for Arts and Media [YCAM]



Photo: Naoki Takehisa
Courtesy of Yamaguchi Center for Arts and Media [YCAM]



Photo: Naoki Takehisa
Courtesy of Yamaguchi Center for Arts and Media [YCAM]



Photo: Naoki Takehisa
Courtesy of Yamaguchi Center for Arts and Media [YCAM]



Photo: Naoki Takehisa
Courtesy of Yamaguchi Center for Arts and Media [YCAM]



Photo: Naoki Takehisa
Courtesy of Yamaguchi Center for Arts and Media [YCAM]



Photo: Naoki Takehisa
Courtesy of Yamaguchi Center for Arts and Media [YCAM]



Photo: Naoki Takehisa
Courtesy of Yamaguchi Center for Arts and Media [YCAM]



Photo: Naoki Takehisa
Courtesy of Yamaguchi Center for Arts and Media [YCAM]



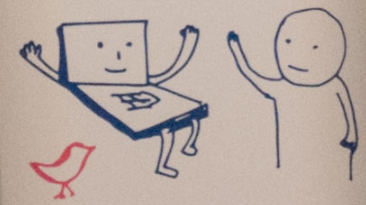
Photo: Naoki Takehisa
Courtesy of Yamaguchi Center for Arts and Media [YCAM]



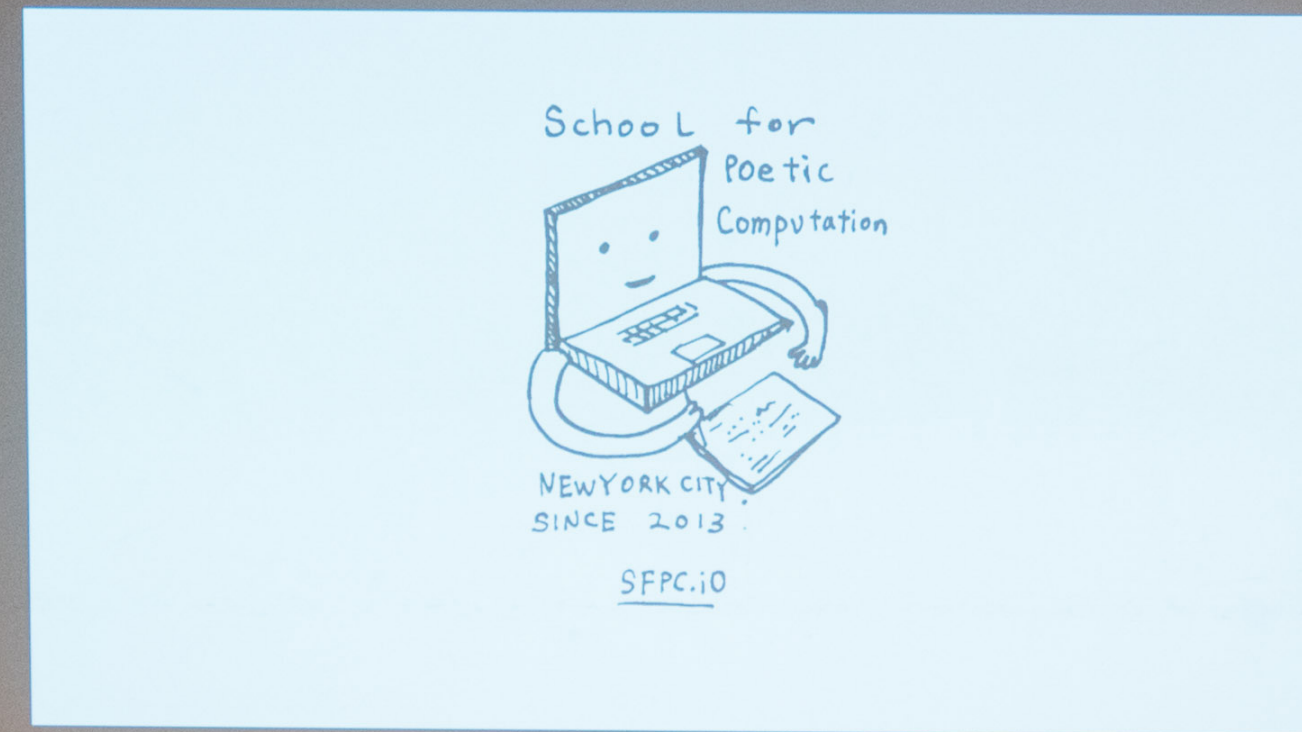
Photo: Naoki Takehisa
Courtesy of Yamaguchi Center for Arts and Media [YCAM]

School for
poetic
computation

Summer 2019
in Yamaguchi

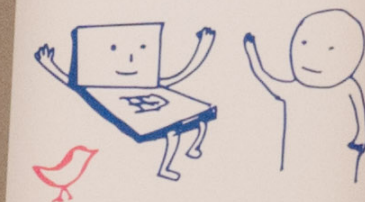


P C



School for
poetic
computation

Summer 2019
in Yamaguchi



P C



9/7 Bio Workshop

PLEASE
TAKE ONE
自由にどうぞ

Masaya Ishikawa
video artist / graphic designer / researcher

ishikawa.masaya@gmail.com
twitter : @kamone

progress Layers Act
at SFPC

"Layers Act" is a project I have been working
from 2014 with Shun Aiba.
Using two layers of simple patterns, it
generates a complex animation. It is based
on research of classical animation
techniques.

At SFPC, I had new ideas to push this project
further by using computer geometry thanks
to Hideo Otsu.

Photo: Naoki Takehisa
Courtesy of Yamaguchi Center for Arts and Media [YCAM]

You can win this game by just closing this browser window

X DON'T use keyboards (typing NOT allowed)

X DON'T use a mouse (clicking NOT allowed)



Hope Sea of time
— living artistically
doing more than money
— only in the medium
small change
deeper thinking
joy alternative
phenomenon



Photo: Naoki Takehisa
Courtesy of Yamaguchi Center for Arts and Media [YCAM]



Photo: Naoki Takehisa
Courtesy of Yamaguchi Center for Arts and Media [YCAM]



Photo: Naoki Takehisa
Courtesy of Yamaguchi Center for Arts and Media [YCAM]

未来のメイカーを育てることへのヒント

次のあるコミュニティのあり方



Photo: Naoki Takehisa
Courtesy of Yamaguchi Center for Arts and Media [YCAM]



SFPC STAFF

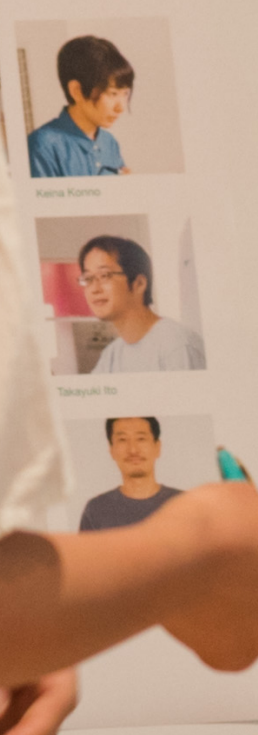
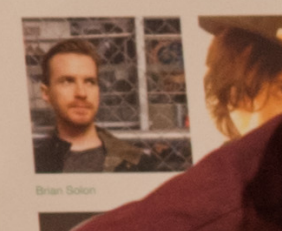


Photo: Naoki Takehisa
Courtesy of Yamaguchi Center for Arts and Media [YCAM]

責任と責任がもたらす自由

"I want a safe space"

- All abilities, backgrounds are not questioned.
- speak my mind, honest.
- No sexism, racism, ableism.
- Physically and emotionally safe.
- Appreciating diversity and ESL (English as Second Language).

"Be a cultural ambassador whose mission is to"

- Ask questions to each other
- Learn and share openly and generously
- Recognize the transformation within and around you
- Build a community of practitioners
- Consider technology as a gift

DIVERSITY



Photo: Naoki Takehisa
Courtesy of Yamaguchi Center for Arts and Media [YCAM]

利便性や効率優先ではないテクノロジーの可能性を見つける

「SFPC Summer 2019 in Yamaguchi」 レポート #1

https://makezine.jp/blog/2019/11/sfpc_report_01.html