

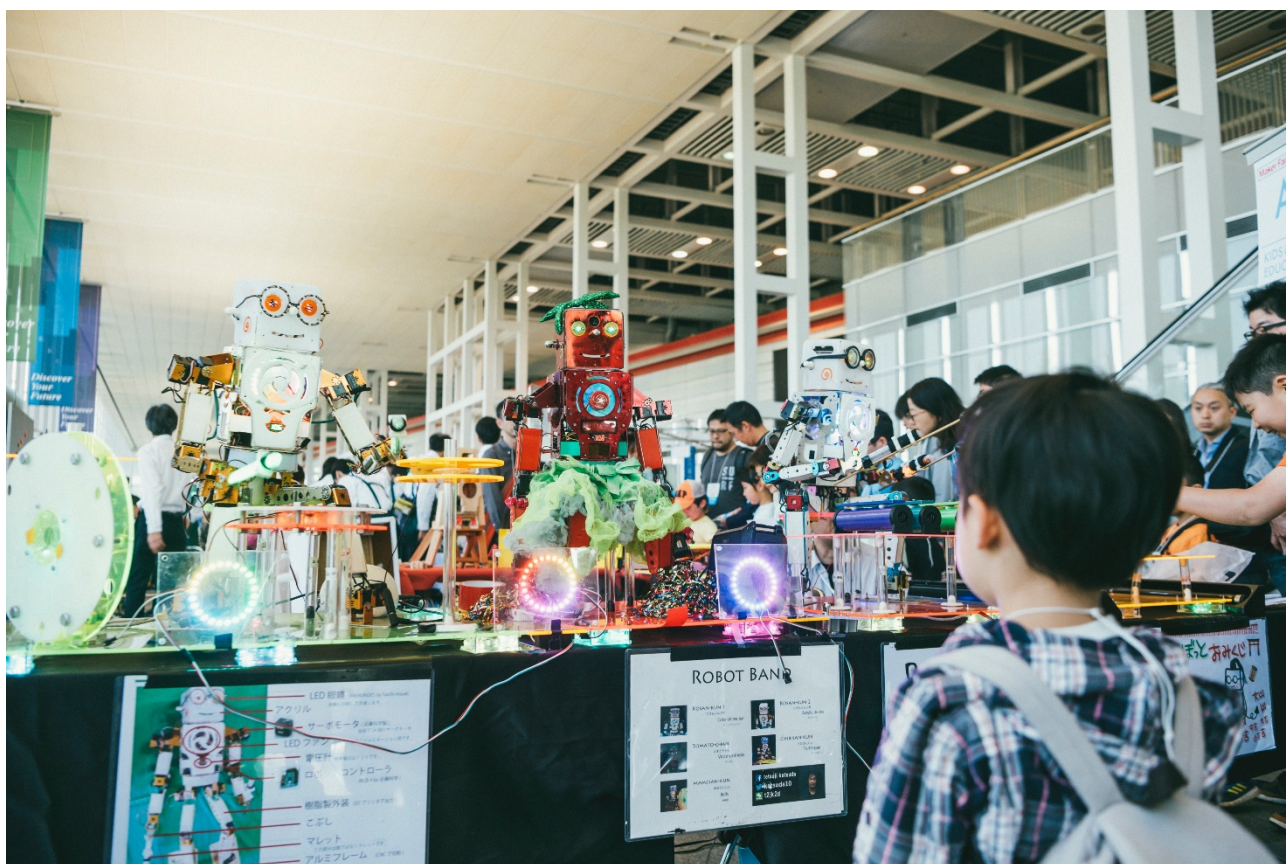
Maker Faire Kyoto 2020

Maker Application Guidebook

Saturday May 2 – Sunday May 3
Keihanna Open Innovation Center @ KYOTO (KICK)

O'Reilly Japan, Inc.

2020.01.09



Event Schedule

Event

Maker Faire Kyoto 2020

Schedule

Saturday, May 2, 2020, 12:00 p.m.-6:00 p.m. (JST)

Sunday, May 3, 2020, 10:00 a.m.-5:00 p.m. (JST)

*Hours may change.

Set-Up Day: Friday, May 1, 2020 – evening (JST)

Saturday, May 2, 2020 – morning (JST)

*Hours to be announced later in the manual.

Event Venue

Keihanna Open Innovation Center @ KYOTO (KICK)

619-0294, Seika-Nishikizu District, Kansai Science City

Admission for Visitors

(Single Day Tickets)

Ticketing Services :

Adult 800 JPY / Youth (Ages 18 & under) 300 JPY

At the Entrance (May 2 & 3, 2020) :

Adult 1,000 JPY / Youth (Ages 18 & under) 500 JPY

*Pre-school Children: Free.

*Valid for entry on either Saturday or Sunday. Weekend Passes (2-day) are not provided.

*Makers & Sponsors will get a limited number of tags depends on your category or program. Please check the manual before buying tickets.

Organizer

O'Reilly Japan, Inc.

Official Accounts & Tags

Website: <https://makezine.jp/event/mfk2020/>

Twitter: [@make_jp](https://twitter.com/make_jp)

Facebook: [Make: Japan](https://www.facebook.com/MakeJapan) <https://www.facebook.com/MakeJapan>

Instagram: [@make_jp](https://www.instagram.com/make_jp)

YouTube: [MakeJapan](https://www.youtube.com/user/MakeJapan) <https://www.youtube.com/user/MakeJapan>

Maker Faire Kyoto showcases the amazing work of all kinds and ages of makers—anyone who is embracing the do-it-yourself (or do-it-together) spirit and wants to share their accomplishments with an appreciative audience.

We fortunately have received applications more than the exhibit spaces. Please note that not all applications will be accepted. Once you apply for the maker exhibit entry, we will contact you to tell whether you win an exhibit ticket **by the end of February 2020.**

Applications Close – February 6, 2020, 1:00 p.m. (JST)

How to Exhibit

A 2-day exhibit to show-off your project(s), how you made them, and inspire people to make (includes Individuals, Groups, Non-Profits, and Businesses)

- **Basic exhibit space (2100 × 2100mm) +1 table (1800 × 600mm) & 2 chairs** *If your project requires larger spaces, submit a request on the Maker Application Form. **Extra space fee might be invoiced additionally.**
- **4 Maker Tags (passes): Free** (Extra cost 1,000 JPY/1 pass) 4 Maker Tags will be given at the Information counter of MFKyoto. If you need 5 or more, the Maker Tags will be available on-site (cash only).

Maker (Non-Profit): Free

These are the individuals or groups who are demonstrating a skill or craft, showing a finished piece of work and explaining it, and/or teaching a skill or leading a hands-on activity.

Commercial Maker: Basic exhibit space fee is 22,000 JPY

These are the individuals or groups who would like to sell products or have charged workshops along with demonstrating what they make at their maker exhibit.

Company: Basic exhibit space fee is 55,000 JPY

These are the businesses that want to demonstrate what they make and/or how it works, in an interactive environment.

Sponsor: sponsorship opportunities, please contact us at sponsors@makejapan.org

When applying, you are required to provide a project photo. Please have these ready before you start your application. Immediately after submitting your application, you will be sent a confirmation letter with your Exhibit Name. If you have not received this letter, contact makers@makejapan.org.

Presentation, Workshop, Live Performance and Outdoor demonstration

Optional activities (Presentation, Workshop, Live Performance and Outdoor demonstration) are limited and your request will be considered. You will receive a confirmation email about optional activities. Translation service is not provided at the Stage, Workshop area, Live Performance area and Outdoor area. If your optional activity is approved, please be ready to host your session in Japanese.

- The Workshop fee will be invoiced if your application is approved.

Type	Maker (Non-Profit)	Commercial Maker	Company
Workshop Fee	Free	22,000JPY	55,000JPY

Internet Connectivity

- If your booth activities rely on Internet connectivity, it is essential that you order the necessary services. A public or rental Wi-Fi network (you need to register or order in advance) might be unreliable for sustained booth activities due to high traffic and interference.
- Those who conduct the presentations and workshops should bring the proper preparations without any Internet connectivity in case of unstable network condition.

Electrical Services

- One electric outlet on each space is available.
- Please bring your own voltage converters.

Exhibit

- Basically the space is empty except rental tables, chairs, and an electrical outlet. Please bring the necessary items and equipment by yourself.
- Please note that fabric items (flag, curtain, tablecloth, carpet), plywood for display and other similar goods must be fireproofed due to the Japanese law.
- No exits, fire fighting equipment, or emergency equipment may be blocked or obstructed under any circumstances.

Disposal

- Recycling, paper, bottles, non-toxic waste, and general trash receptacles will be available. If you find your trash is too big at your exhibit, let us know in advance. Please clear your exhibit area completely when you leave. Please note that electronic waste, construction waste, and oversized waste are not available.

VISA Supporting Service

- Start your VISA process early. We can arrange supporting documents for your VISA process.

[11,000JPY/Shipping \[Application for VISA supporting service dead : March 12\]](#)

Safety & Prohibited Issues

- All exhibits and dangerous materials you are going to bring must be submitted through this Makers Application Form and/or Final Registration. Describe all possible safety issues. Non-Registered dangerous materials must be removed from the exhibiting spaces.
- **Exhibiting with fire (any size of flame) and/or bringing fuel (liquid, gas, ex. hydrogen) on site are prohibited by Japanese law.**
- The Fire Department will inspect your exhibit during set-up (May 1 evening or May 2 morning) according to the Final Registration you submit. Organizer will notice you the inspection schedule later, if you are required to be present during the inspection. Makers and sponsors must be at their space and ready to exhibit when the Fire Department arrives. Non-Registered dangerous materials must be removed from the exhibiting spaces.

Exhibiting with fire (any size of flame) and/or bringing fuel (liquid, gas, ex. hydrogen) on site are prohibited by Japanese law.

Dangerous materials or projects requiring permit list

1. Lithium-ion battery, Lithium polymer battery
 2. Heating tool such as soldering tool
 3. 3D printer (with inflammable materials such as resin, alcohol and so on)
 4. Laser equipment such as laser cutter
 5. CNC
 6. Flying project such as drone, model airplane, balloon
 7. Huge project taller than 3m
 8. Projects containing food
 9. Project which needs high voltage
 10. Chemicals
 11. Project which uses frequencies
 12. Project which uses liquids such as water
 13. Ceiling structure such as dome, tent
 14. Living animals and fishes
 15. Other dangerous materials or tools
- At Maker Faire Kyoto 2020, giving away, selling, or sampling food/beverage (packaged or unpackaged) without organizer's permission is not allowed.
 - Management reserves the right to restrict exhibits, displays, demonstrations, presentations, or workshops that become objectionable because of noise, method of operations, materials, safety, or any other reason.

Note

- Applicants of the Commercial Makers and Companies are also reviewed.
- Please hand carry your project and luggage to/from the Faire site during Set-Up and Tear-Down hours.

Terms & Conditions of Participation

- You agree to comply with all applicable laws, including Radio Act in Japan, the Maker Application Guidebook, and any other requirements, and/or rules & regulations issued by us in connection with Maker Faire Kyoto. You are responsible for obtaining any permissions required for your performance, distribution, or posting of copyrighted material; for obtaining any necessary licenses and permits; and for payment of all taxes (including sales and use taxes), license fees, or other charges applicable to your participation in Maker Faire Kyoto. We may terminate this Agreement and/or your participation in Maker Faire Kyoto if you violate this Agreement, or the standards of conduct established by us or by the venue proprietor.
- O'Reilly Japan, Inc. is not responsible for and shall not be liable to you for any damage, loss, harm, injury or death to your person, property, or business, or any of your visitors, officers, agents, or employees, resulting from theft, fire, earthquake, water, unavailability of facilities, any errors or omissions in Maker Faire-related materials, insufficient participation, accident, or any other reason in connection with Maker Faire Kyoto or related activities (such as staging), except to the extent directly attributable to our willful misconduct or gross negligence.
- You and your Exhibit may appear in recordings of Maker Faire Kyoto and related promotional or documentary materials. Your rights are waived to any images and/or recordings you may appear in while at Maker Faire Kyoto and any/all related promotional or documentary materials.
- "Make:" and "Maker Faire" are registered trademark of Make Community LLC..

Makers Schedule

Deadlines

1. Deadline to submit on **Maker Application Form.** **February 6, 2020, 1:00 p.m. (JST)**
2. After reviewing all applicants, we will email you to **confirm your application.** Please note that not all applications will be accepted because the exhibit spaces are limited. **February 28, 2020**

----- Accepted Makers -----

3. **Commercial Makers and Companies** will be invoiced for the full amount of **the Exhibit Fee and Optional Cost**(extra space and so on/JPY). **Payment March 5, 2020**
These fees are non-refundable in any circumstances.

Bank transaction charges are not included in this amount. **All transaction charges are to be borne by the applicant, OUR.** Otherwise, we will invoice you all bank transaction charges for each payment after the event. Please note that the application will be completed after our receipt of your Exhibit Fee and optional cost. Otherwise, the exhibit acceptance will be canceled.

4. Deadline to submit **Final Registration.** **March 13, 2020**
5. **Maker Manual** will be emailed. **Mid April, 2020**
6. 4 Maker Tags (Passes) will be given at the Information counter of Maker Faire Kyoto. Maker Tags (Passes) are required to enter the faire place even during the set-up and the teardown (pre-school children: free).
You can also buy extra tags at the Information counter of MFKyoto (Cash Only). **May 1-2, 2020**
7. **Set-Up Day** **May 1-2, 2020**
8. **Event Day** **May 3-4, 2020**

Note: Please plan your stay early! Most of the accommodations in Kyoto may be full up because of the reservations by visitors during Golden Week vacation.

For more information, visit the General Kyoto Yamashiro AREA promotion company, Ocha no Kyoto DMO, (<http://ochanokyoto.jp.e.aav.hp.transer.com/hotel/>)

Thank you for your interest in participating in Maker Faire Kyoto 2020. We are looking forward to seeing you in Kyoto!

Maker Faire Kyoto Maker Team Contact : makers@makejapan.org